



INTEGRABLE DOT PEEN

XF530

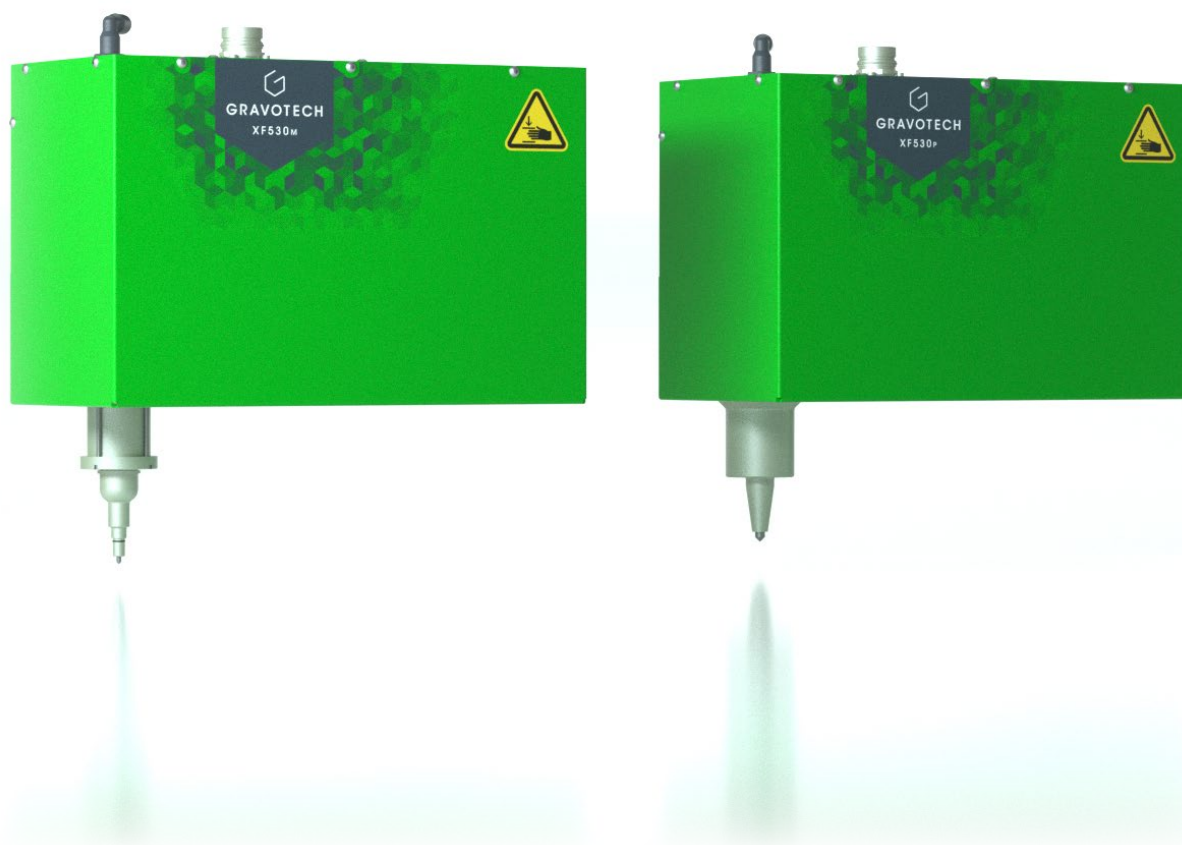


GRAVOTECH

by  **BRADY**



This dot peen marking machine creates durable tamper-proof marks on all metals. This is the perfect solution to identify parts that will withstand harsh conditions, direct marking before part processing and for anti-counterfeiting markings.



DEEP MARKING

With up to 0.5 mm depth, the XF530 dot peen machine is the only deep engraving solution able to reach this level of depth in such a short cycle time. The marking results are clear and resistant to weather conditions, contaminants, rust, and guaranteed long-term readability. Its also the best solution to perform a direct marking before part processing, painting, or surface treatment.

DEDICATED SOLUTION FOR LARGE CHARACTERS

The XF530 large marking area of 200 X 50 mm (8 x 2 in) is specially adapted to engrave large characters (more than 10mm (0.4 in) height) for easy readability from a long distance or in outdoor locations. This deep dot peen marking machine is the perfect solution for the oil & gas market and building industries.

ROBUST & DURABLE

This deep dot peen engraving machine in pneumatic or electromagnetic version is made of high-quality and high-performance components. Its proven design has been improved for decades to obtain exceptional durability and reliability, especially in the most demanding applications. XF530 is guaranteed to have durable tamper-proof marks on all materials with a reduced cost of ownership.

SEE OUR VIDEO



KEY FEATURES



Mobile solution

Our range of products is easily transformable into a mobile solution to mark large parts and parts that cannot be dismantled, on fixed stations or scrolling vehicle lines: a pair of large handles for easy positioning.

With a standard or customizable foot, the machine is always firmly positioned on the part.

2 rings at the top that can be connected as a balancer making easy operator work, suppress troubles related to heavy handling and to integrate into pipeline marking.



Pneumatic version for speed

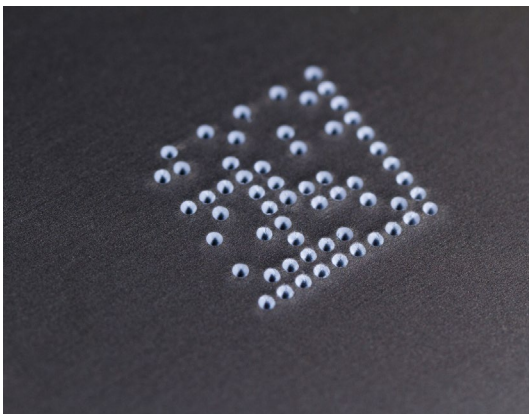
Our pneumatic dot peen machines are the best to mark text at a very short cycle time.

Compressed air offers exceptional performance for markings.

The stylus pin vibrates at high frequency, meeting the highest speed requirements in industrial sectors.

Pneumatic dot peen is also the preferred solution to create direct marking before part processing, painting of surface treatments.

The width of the line is large enough to remain legible even after a wide layer has been applied.



Electromagnetic version for precision

The electromagnetic marking machines are more suitable for applications needing great precision and consistency.

It is perfect to create durable tamper-proof marks 2D codes.

The electromagnetic version has the highest amplitude, allowing it to absorb a height difference of 7mm, making it the preferred solution for curved parts.

LEARN MORE ABOUT PRODUCT



CONTROLLER

XCOM



Simplified user experience

The XCOM controller looks like a tactile tablet (7 "/18 cm) and is just as easy to use. From its tactile screen, the operator can quickly set up, edit, program templates, and launch markings. No PC required.

Hyperconnected XCOM

The ideal controller for industry 4.0. Just choose your preferred field bus (Profinet, Ethernet IP or EtherCAT) to integrate the XCOM to your process and enjoy a reduced commissioning time and full interoperability on your production line, whichever the PLC and devices used.

Empower your data

The data collection and storage- feature in the XCOM simplifies the traceability of your products: generate history files, creates dashboards to monitor machines, track your productivity, and set up preventive maintenance. This controller is a powerful tool that will save time, money, and headaches!

ACCESSORIES



Rotary device



Head adjustment Device



Adaptive connections



Automatic Z-Axis



Process control box



Protective covers

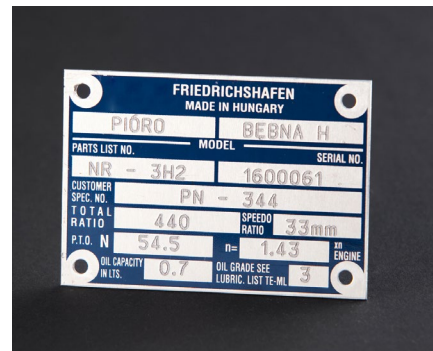
APPLICATIONS



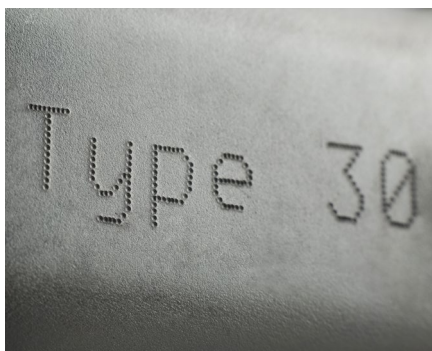
Aerospace part marking



Automotive marking



Marking tools for identification and equipment traceability



Aluminum engraving



Steel engraving



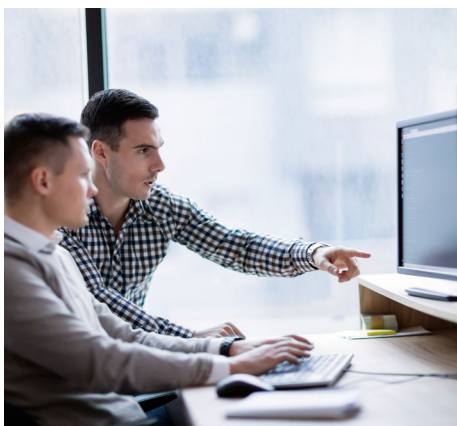
Stainless steel engraving

SERVICE & SUPPORT



Training

Our training modules are designed to optimize your use of our solutions and are available for our full range of machines, software and accessories.



Technical support

We bring you local support in your language in more than 50 countries, where we have established presence directly and with our distribution partners.



Maintenance

Thanks to experience gathered with Gravograph and Technifor and our global presence in more than 50 countries with 150 Gravotech technicians and our distributor partners, we can offer you a wide range of services.

MAKE YOUR SAMPLES



TECHNICAL DATA

XF530

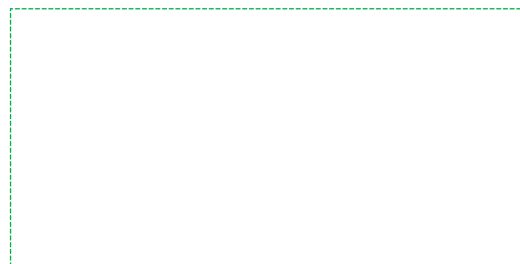
Model	XF530p	XF530m
Technology	Pneumatic	Electromagnetic
Machines dimensions (L x W x H)	343 x 170 x 221 mm (13.5 x 6.7 x 8.7 in)	
Machine weight	13.5 kg (29.8 lbs)	
Marking area (L x W)	200 x 50 mm (8 x 2 in)	
2D codes	Datamatrix, QR Codes	
Communication Interfaces	RJ45, USB(x2), RS232, 8I/4O, Process IO	
Compressed air supply	5 - 7 bar	N/A
Display	7" color touchscreen	
Embedded fonts	10	
Fieldbus (option)	Profinet, Ethernet IP	
Input voltage	100 - 240 V AC	
Languages available	19	
Operating temperature	5° to 45° (41 to 113 F)	
Rated power consumption	140 VA	260 VA
Safety Performance Level (option)	PL d	



info.sg@gravotech.com
 +65 6262 2945
www.gravotech.sg

GRAVOGRAPH SINGAPORE PTE LTD
 11 Woodlands Close, #04-05 Woodlands 11
 737853, Singapore, Singapore

Distributed by:



Follow us:



gravotech.off



Gravotech Group



Gravotech



Gravotech - Gravograph